

St Mary's Parish Newsletter

22nd December to 11th January



St Mary's LINTON

Rooted in God. Rooted in Community

Contacts:

Team Rector:

Revd Paul Seaton-Burn

(Usual day off Thursday)

rector@stmaryslinton.org.uk

or 01223 455098

Associate Priest:

Revd Michael Wilcockson (Usual day off Saturday)

associate.priest@stmaryslinton.org.uk or 01223 891005

Churchwardens:

David Watts david.watts@stmaryslinton.org.uk

Charlotte Dodd charlotte.dodd@stmaryslinton.org.uk

Linton Parish Coordinator:

Elena Beletskaya admin@stmaryslinton.org.uk

(Any items to be included in the next Newsletter to be received by **9am on 6th January**, thank you)

Services for Sunday 22nd December, 4th Sunday of Advent:

8am: BCP Holy Communion (said)

10am: Café Church with Communion

10am: Shudy Camps: Holy Communion

4pm: Bartlow: Carols by Candlelight

4pm: Choir rehearsal

4pm: Pavilion: Choir Tea

6pm: Carols by Candlelight

Readings: Micah 5:2-5a; Luke 1:39-45 (46-55)

This week:

Monday, 23rd Dec 10.45am: Symonds House Morning Worship

Christmas in the Linton Parishes

Christmas Eve, 24th December:

4pm: Linton - Crib Service

4pm: Horseheath: Crib & Carol Service

10.45pm: Choir rehearsal

11.30pm: Linton - Midnight Mass

11.30pm: Shudy Camps: Midnight Mass

Christmas Day, 25th December:

8am: Linton - Holy Communion BCP (said)

10am: Linton - Christmas Day Family Communion

10am: Bartlow - Holy Communion

10am: Castle Camps - Christmas Morning Family Communion

11.30am: Nichols Court Holy Communion

Readings: Isaiah 62:6-end and Luke 2:[1-7]8-20.

Services for Sunday 29th December:

8am: Linton - Holy Communion BCP (said)

10am: **Shudy Camps - Linton Parishes Joint Communion & Covenant Prayer**

Readings: Psalm 148; Luke 2:41-end

The following week:

Tuesday, 31st Dec, 4pm: Pavilion - Events Committee

Tuesday, 31st Dec, 8pm: Pavilion - New Year's Eve Party

Thursday 2nd January 2025, 10am - Said Holy Communion

Saturday, 4th January, 10am - Friends of St Mary's
Coffee Morning

Services for Sunday 5th January 2025, Epiphany:

8am: Holy Communion BCP (said)

10am: Sung Communion

1.30pm: Memorial Service for Obi Thornhill

4pm: Choir rehearsal

4pm: Horseheath: Evening service with prayer for healing

6pm: Linton: Evensong for Epiphany
Readings: Isaiah 60:1-6; Matthew 2:1-12.

The 2nd week of January:

Monday, 6th Jan, 10.45am: Symonds House Holy Communion

Wednesday, 8th Jan, 7pm: Bellringing

Thursday, 9th Jan, 10am: Said Holy Communion

Friday, 10th Jan, 9am: Friday Church with Linton CE Infant School

Friday, 10th Jan, 10.30am: Funeral Service: Mrs Stevens (known as Jean), the Service starts at 11am.

Friday 10th Jan, 4pm: Evening Prayer, Resurrection Chapel

PRAYER

Please remember in your prayers:

For healing:

Alan and Brenda Cole, Hannah, Richard Jessop, Tracey,
Jo Plumb, Celia Fisher, Michael Horton, Geoff Pearce,
Marion Young and Yelena Novikova.

For families of the late:

Sarah Campion, Maurice Biggs, Jean Stevens

*To add to this list please contact the Parish Coordinator or member
of the Ministry Team or use the sheet at the back of the church.*

Thanks.

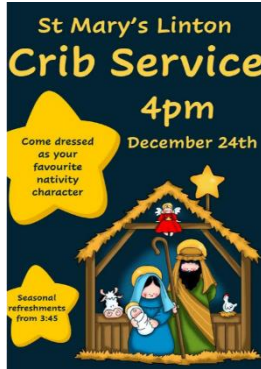
NEWS & EVENTS COMING UP

LINTON CAROL SERVICE

*

Sunday
22nd December,
6pm

St Mary's, Linton



Midnight Mass
Christmas Eve
11.30pm

Christmas Day

BCP Holy Communion at 8am:

a quiet service in traditional language to start the day

Christmas Family Communion at 10am:

come and celebrate the birth of Jesus.

The Sheep are Gone!

HELP!!!

The Bethlehem Sheep have escaped and are in 18 windows along Linton High Street. Can you find them all?

Forms to fill in can be found on the St Mary's church website or on the church porch. To claim your prize, bring your completed form to the Crib Service at 4 pm.



Thursday morning Holy Communion will not take place on 26th December, but will be held at 10am, 2nd January

New Year's Eve Party



31st December, 8pm in the pavilion

Tickets £3 to cover heating and prizes. Bring your own drinks and a plate of food to share.

Tickets available from Sue Ellis or Charlotte Dodd.

The Well – Sunday, 12th January 6pm-7pm

A welcome space of quiet by candlelight, providing space to think, pray, rest meditate. With times of stillness, reflective music and only a few words, **The Well** offers a good way to begin the new year with God and to reflect on the season ahead.



Coffee Morning in aid of the Friends of St Mary's

on Saturday 4th January 2025 at 10am, £5 / Person

The Friends will be serving savouries including cheese scones, sausage rolls and smoked salmon triangles – just for anyone who has had a surfeit of sweet things and chocolate over Christmas.

There will also be a raffle and hot drinks, as well as an opportunity to be the first to book tickets for the popular

Burns Night Ceilidh at St Mary's

Celebrate Burns Night early with us at St Mary's, Linton, on **18th January at 7pm**. We have the Cambridge University Ceilidh Band returning and there will be a Burns Night supper included (vegetarian haggis available).



Tickets are £20 and available from Charlotte Dodd or Sue Ellis.

Friends of St Mary's Quiz Night

on Saturday, 15th February from 6.30pm with the first question at 7pm
The Linton News' esteemed editor, David Watts, will be the quizmaster and there will be a prize for the winning (and losing) teams.



To book tickets (£10 per person) please, phone 01223 892160 or contact info@friendsofstmaryslinton.org.uk after 4th January.

Or to be the first in the queue come to The Friends' Coffee Morning in The Pavilion behind St Mary's on 4th January from 10.00 am - 12noon!

This should be a light-hearted evening that can be enjoyed with friends or an opportunity to make new friends and raise spirits at this dark time of year. Baked potatoes with chilli and salad will be served during the evening. Please bring your drinks and glasses. Teams can be up to six people, but if you are one or two, we will combine you with others.

About the Friends: Our Parish Church is a beautiful building that is over 900 years old and the only Grade 1 listed building in Linton.

The Friends of St. Mary's is a registered charity and was founded in the 1980s to restore, preserve, repair, maintain and improve the church building, fixtures and fittings. Most recently over £120,000 has been spent on further repair works, redecoration and a new lighting system. The Parish Church receives no money from the Diocese of Ely, the wider Church of England, central government or local councils, meaning that the charity needs the continued support of the local community and other sympathetic 'friends' to carry on this vital work.

Christmas Day at Nichols Court

Revd Michael will be taking a service of **Holy Communion**, with carols, at Nichols Court at 11.15am. Everyone is very welcome. Pam Latimer

The Events Committee has been busy planning a **programme of events** for the next few months. Please see the posters and help yourself to a flier on the table in church: events@stmaryslinton.org.uk

Linton Parishes Communion at New Year – Sunday 29th

We look forward to celebrating the arrival of 2025 with a joint service of **Holy Communion for the Linton Parishes on Sunday 29th December at Shudy Camps church.** Using part of the Methodist Covenant service, this is an opportunity to reaffirm our faith and working together at the beginning of the year.

There is an 8am said Holy Communion at Linton that morning, but we hope many of us will travel to St Mary's, Shudy for this service. Lifts available – contact Elena on admin@stmaryslinton.org.uk

Fundraising

Church expenses

Did you know that after the Ministry Share the next largest cost to the Church is our **gas bill**?

We like to try and keep the Church warm, but everything is relative so you will probably still need to keep your coat on! **The November gas bill has come in at £908.39.** This makes the gas bills for the year total £6,297.19, not including December.

Used stamps

Please save your used stamps for the RNIB, there is a box at the back of the church for it. Thank you. *Lian Watkin*

Give as you live

If you buy online consider shopping via www.giveasyoulive.com to raise money for St Mary's. Most major retailers are in the scheme, including Sainsbury and Tesco. Please sign up with Give as You Live and **enter our charity number 1138508** as the charity you wish to support.

**Do you have a new email/phone number
or would you like to be added to our mailing list?**

Please let Elena, [**admin@stmaryslinton.org.uk**](mailto:admin@stmaryslinton.org.uk), know and copy in [**molly.warrington@stmaryslinton.org.uk**](mailto:molly.warrington@stmaryslinton.org.uk) so the newsletter mailing list and your church records can be updated for GDPR.

Thank you.